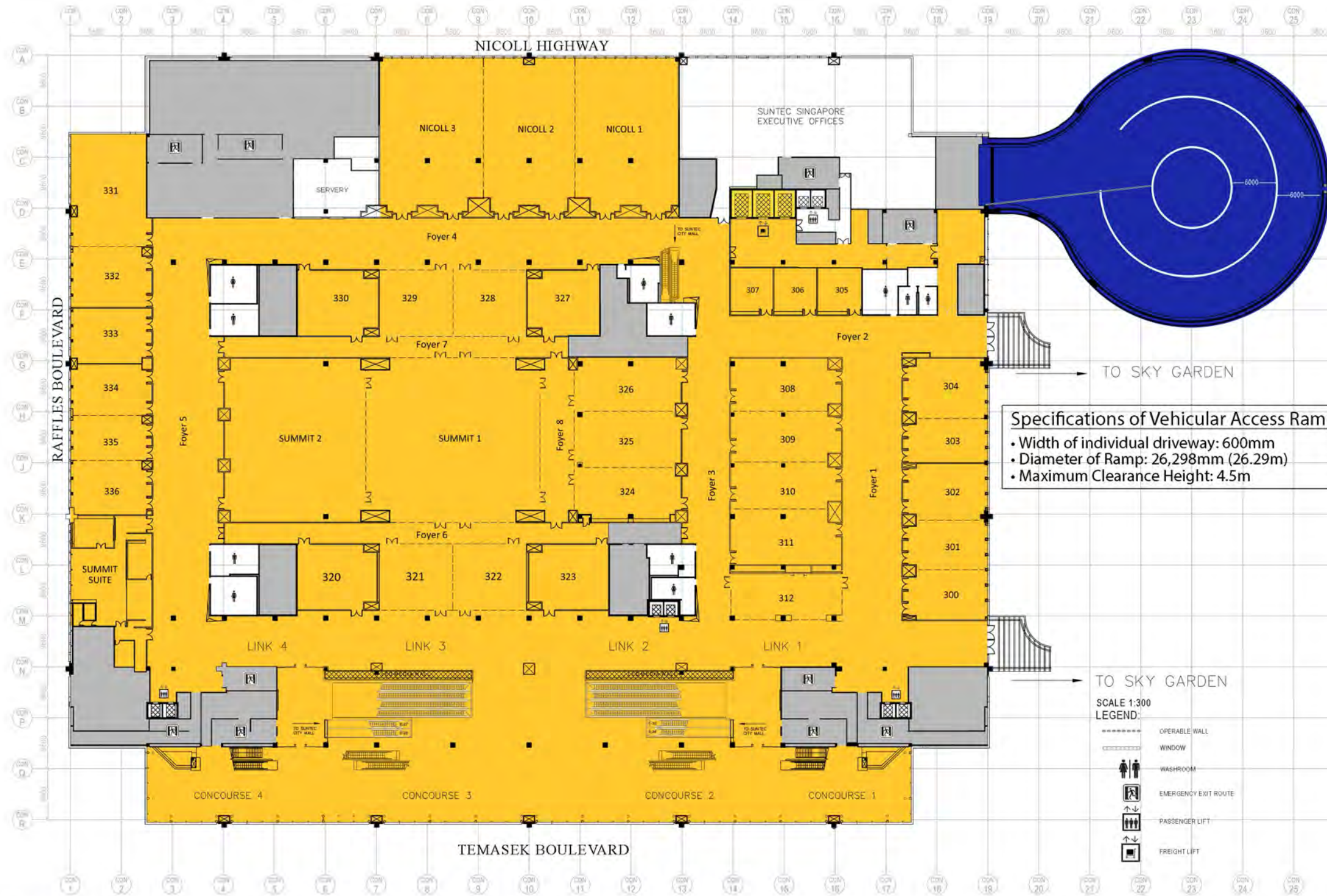


1. General Floor Plan
2. Floor & Loading Specifications Plan
3. Operable Wall Specifications & Layout
4. Reflected Lighting Plan
5. Reflected Lighting Details
6. Ceiling Height Plan







TECHNICAL SPECIFICATIONS FOR FREIGHT ELEVATORS

- System: Traction
- Speed: 0.5m/s (1.64 Ft/s)
- Capacity: 7,000kg/7 tonnes (15,400 lbs)
- Level Served: Basement 1, Level 2 to 4 & Level 6 (2 elevators)
Basement 2 to Level 4 & Level 6 (1 elevator)
- Interior Dimensions: 2.5m (W) x 4.35m (D) x 3.1m (H)
[8.2ft (W) x 14.3ft (D) x 10.2ft (H)]
- Door Size: 2.5m (W) x 2.8m (H) [8.2ft (W) x 9.2ft (H)]

FLOOR SPECIFICATIONS

- All rooms and foyers are carpeted.
- Concourse 1-4, Link 1-4 are granite flooring.

Specifications of Vehicular Access Ramp

- Width of individual driveway: 600mm
- Diameter of Ramp: 26,298mm (26.29m)
- Maximum Clearance Height: 4.5m

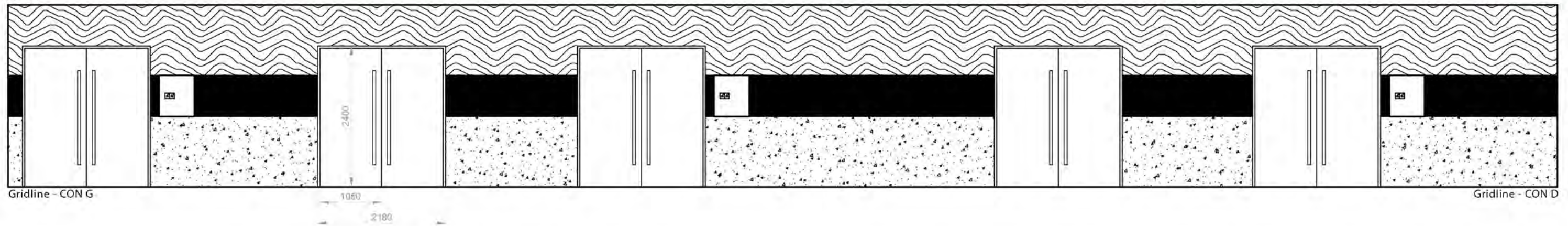
SCALE 1:300
LEGEND:

- OPERABLE WALL
- WINDOW
- ♂ ♀ WASHROOM
- 🚪 EMERGENCY EXIT ROUTE
- ↑ ↓ PASSENGER LIFT
- ↑ ↓ FREIGHT LIFT

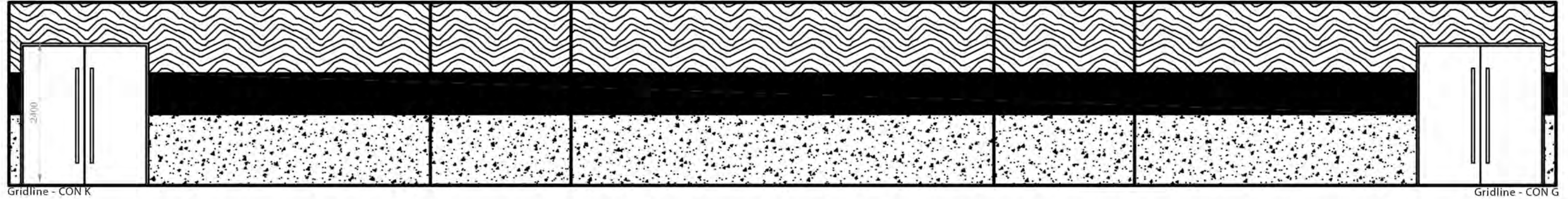
FLOOR LOAD CAPACITY

- Floor Load Capacity: 5.0 kN/m² (100lb/sq ft)
- Container Vehicular Ramp: 10.0kN/m² (200lb/sq ft)
- Loading & Unloading Bays: 10.0kN/m² (200lb/sq ft)
- Service Vehicle Lots: 10.0kN/m² (200lb/sq ft)

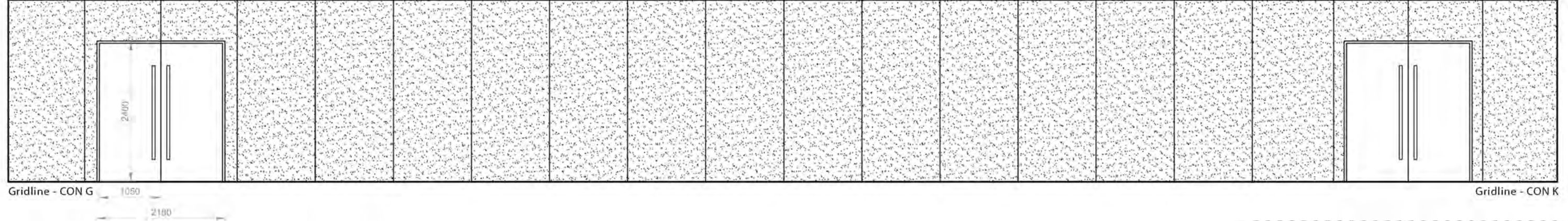
WALL 1



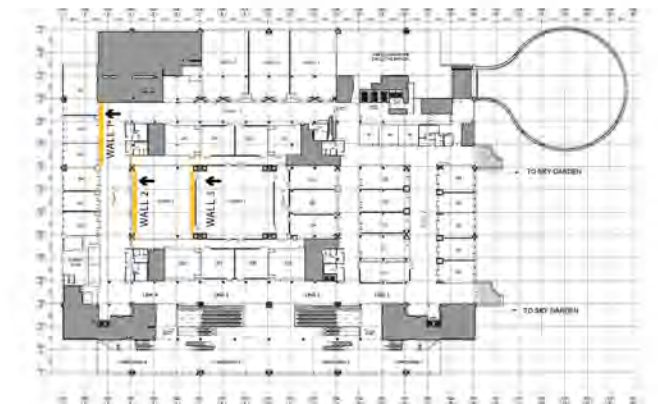
WALL 2

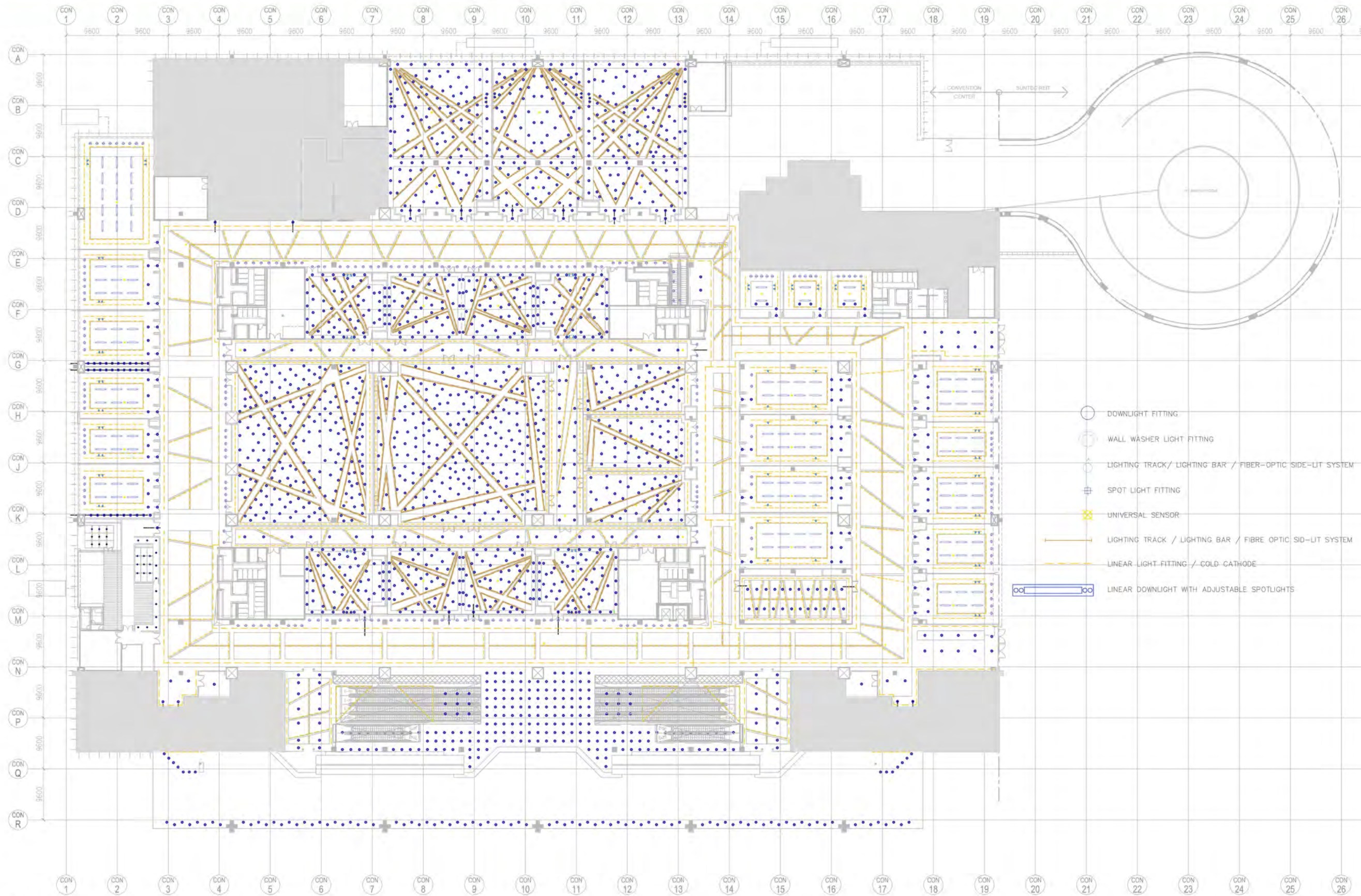


WALL 3

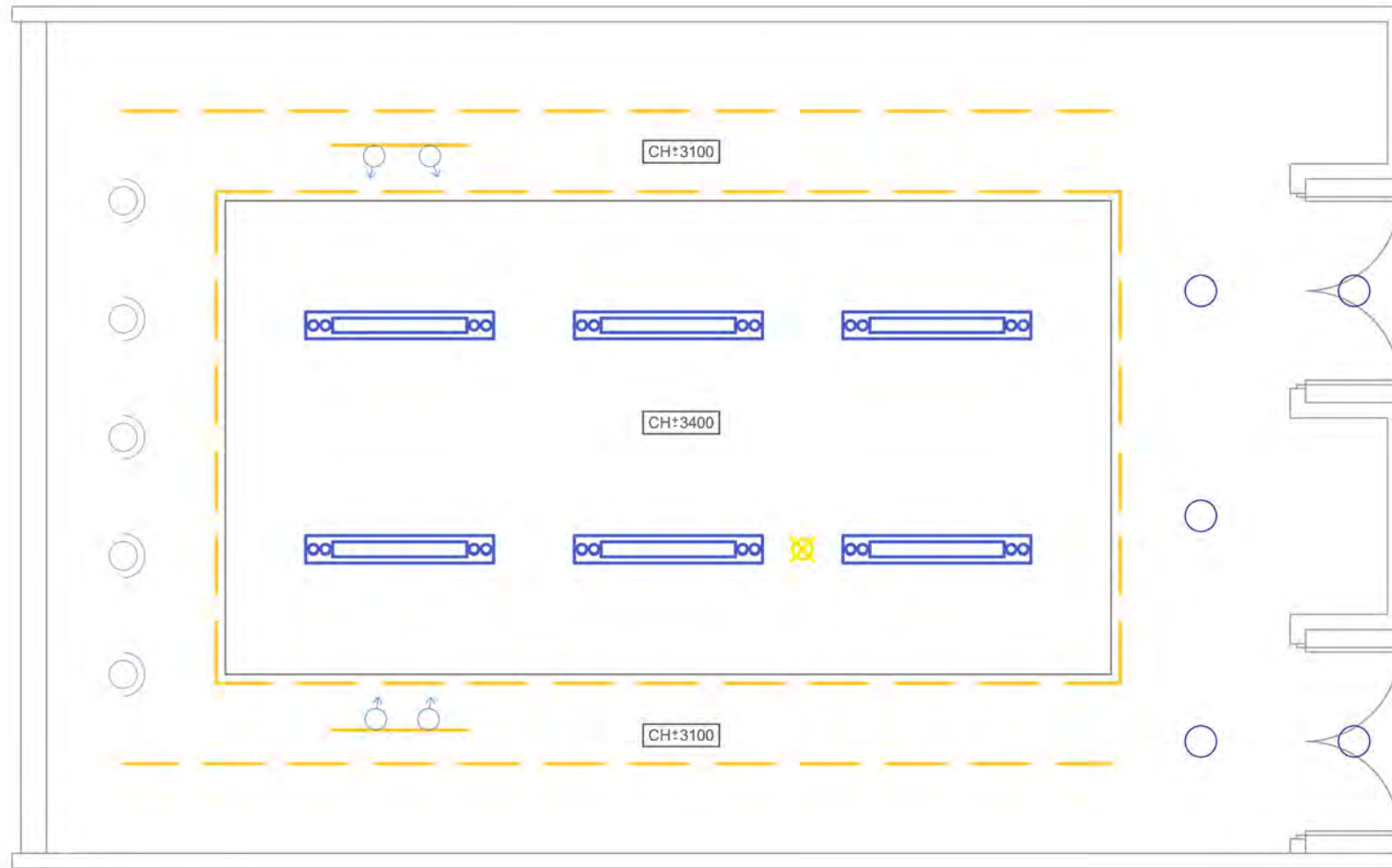


SCALE 1:75
Soundproofing specifications for operable wall: 55dB

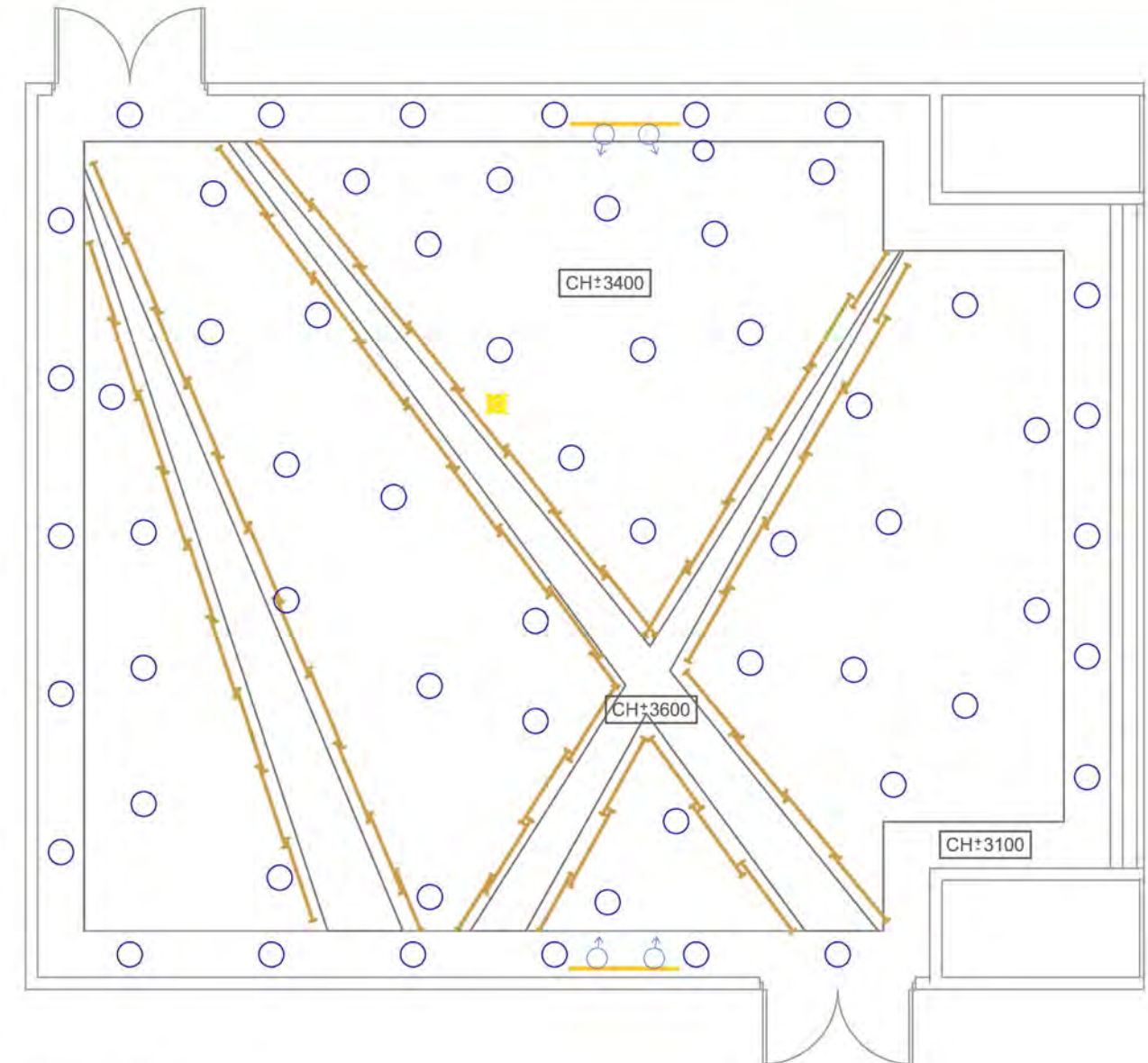




Scale 1:650



Scale 1:50
Meeting Room 335

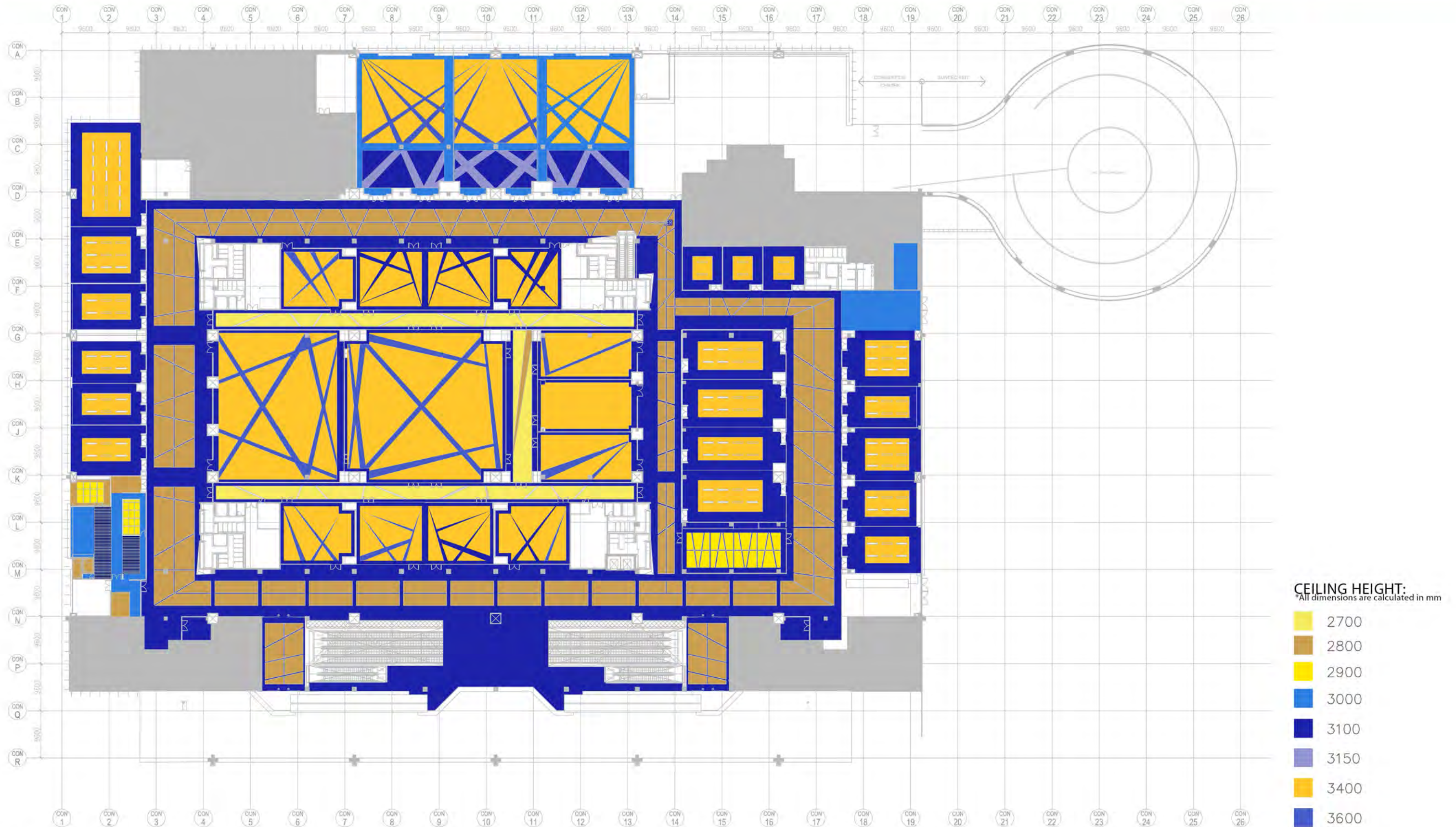


Scale 1:50
Meeting Room 320

LIGHTING LEGEND

-  DOWNLIGHT FITTING
-  WALL WASHER LIGHT FITTING
-  LIGHTING TRACK / LIGHTING BAR / FIBER-OPTIC SIDE-LIT SYSTEM
-  SPOT LIGHT FITTING
-  UNIVERSAL SENSOR
-  LIGHTING TRACK / LIGHTING BAR / FIBRE OPTIC SIDE-LIT SYSTEM
-  LINEAR LIGHT FITTING / COLD CATHODE
-  LINEAR DOWNLIGHT WITH ADJUSTABLE SPOTLIGHTS





Scale 1:600