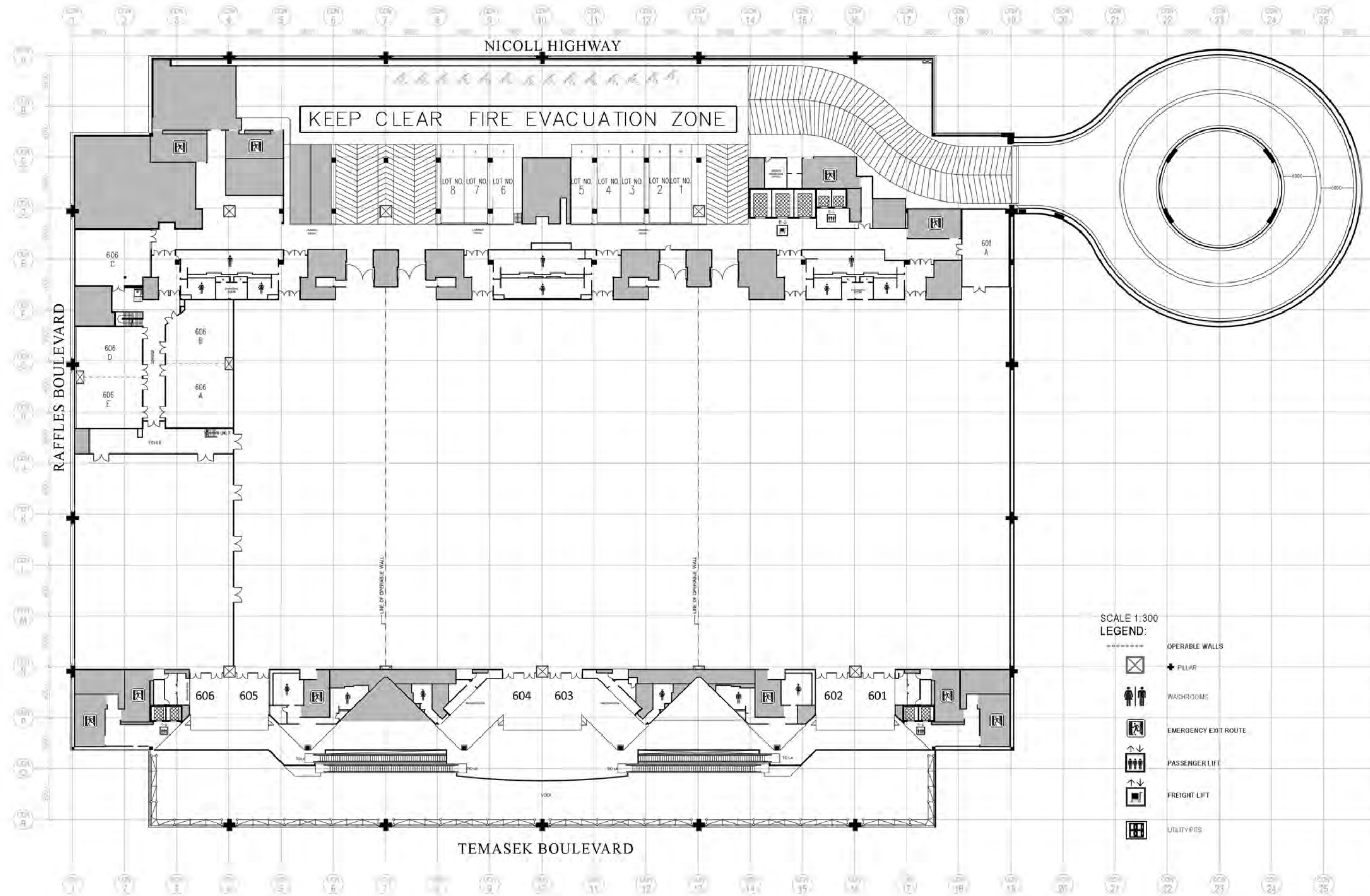
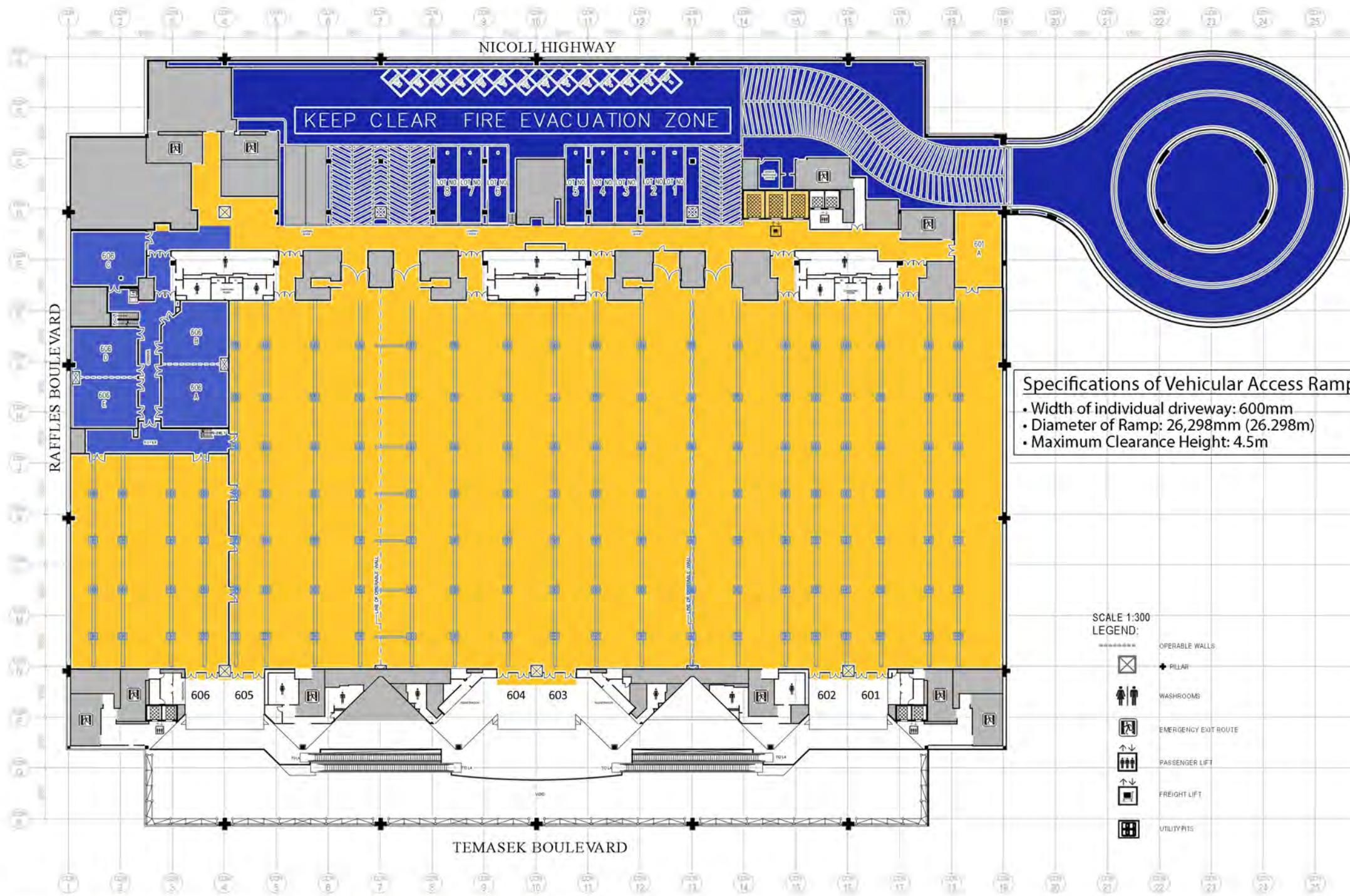


1. General Floor Plan
2. Loading & Utility Pits Specifications Plan
3. Door Dimensions (I)
4. Door Dimensions (II)
5. Mechanical & Electrical Risers Specifications & Layout
6. Truss System Specifications & Layout
7. Reflected Ceiling & Lighting Plan







### Specifications of Vehicular Access Ramp

- Width of individual driveway: 600mm
- Diameter of Ramp: 26,298mm (26.298m)
- Maximum Clearance Height: 4.5m

SCALE 1:300  
LEGEND:

- OPERABLE WALLS
- ◆ PILLAR
- ♂ ♀ WASHROOMS
- ⚡ EMERGENCY EXIT ROUTE
- ↑ ↓ PASSENGER LIFT
- ⬇ FREIGHT LIFT
- ⊞ UTILITY PITS

### FLOOR LOAD CAPACITY

- Floor Load Capacity: 5.0 KN/m<sup>2</sup> (100lb/sq ft)  
\* If the area is required to be carpeted, the carpet tiles will be laid before the moving-in.
- Floor Load Capacity: 17.5 KN/m<sup>2</sup> (350lb/sq ft)
- Container Vehicular Ramp: 10.0KN/m<sup>2</sup> (200lb/sq ft)
- Loading & Unloading Bays: 10.0KN/m<sup>2</sup> (200lb/sq ft)
- Service Vehicle Lots: 10.0KN/m<sup>2</sup> (200lb/sq ft)

### TECHNICAL SPECIFICATIONS FOR FREIGHT ELEVATORS

- System: Traction
- Speed: 0.5m/s (1.64 Ft/s)
- Capacity: 7,000kg/7 tonnes (15,400 lbs)
- Level Served: Basement 1, Level 2 to 4 & Level 6 (2 elevators)  
Basement 2 to Level 4 & Level 6 (1 elevator)
- Interior Dimensions: 2.5m (W) x 4.35m (D) x 3.1m (H)  
[8.2ft (W) x 14.3ft (D) x 10.2ft (H)]
- Door Size: 2.5m (W) x 2.8m (H) [8.2ft (W) x 9.2ft (H)]

### UTILITY PIT & TRENCH SYSTEM

#### Wet Compartment

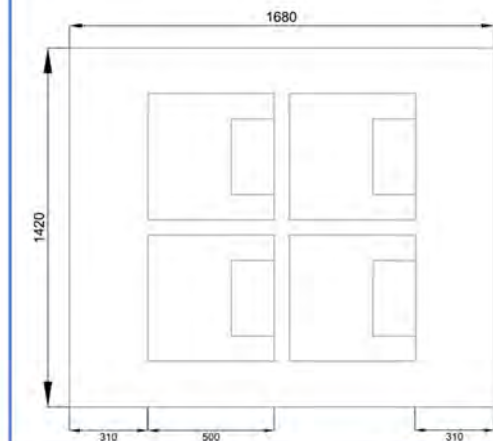
- Utility Pit: 600mm (L) x 600mm (W) x 725mm (H)
- Trench: 175mm (W) x 200mm (H)
- 1 x 25mm (1") diameter water outlet at 2-3 bar pressure (29~43.5 psi). Total water supply to the Hall will be 9 L/S (118GPM).
- 1 X 25mm diameter hose reel water supply outlet is located between gridline J & K for the installation of temporary hose reels to satisfy FSSD requirements.
- 1 x 100mm diameter floor drain (2")
- 1 x 100mm diameter drain point (2")
- 1 x 20mm diameter compressed air outlet at 4-6 bar pressure. The maximum total air supply will be 150 L/S for the Hall, (25/32") (58-87 psi),(317 CFM).

#### Electric Compartment

- Utility Pit: 850mm (L) x 1300mm (W) x 725mm (H)
- Trench: 275mm (W) x 200mm (H)
- 2 x 60 Amp TPN Outlets: 400 volts
- 2 x 30 Amp TPN Outlets: 400 volts
- 1 x 30 Amp DP Outlet: 230 volts

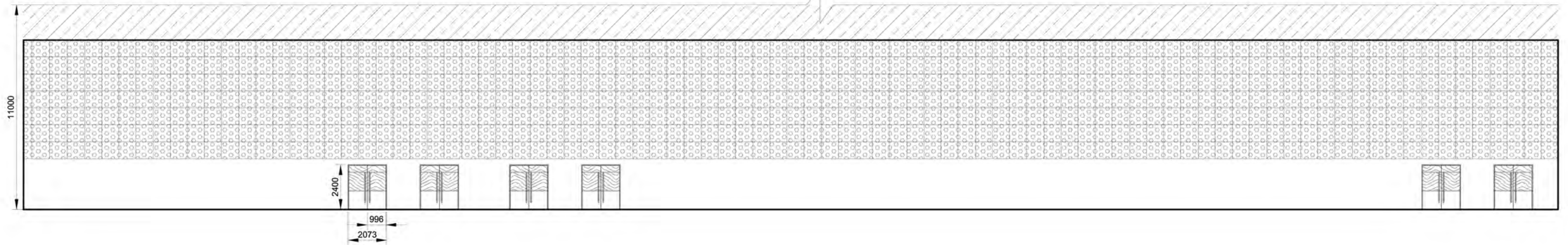
#### ELV Compartment

- Utility Pit: 600mm (L) x 600mm (W) x 725mm (H)
- Trench: 100mm (W) x 200mm (H)
- 1 x PVC water proofed enclosure
- 4 x twin telephone outlet
- 1 x spare outlet complete with ten pairs of telephone cables
- Microphone outlets at every second utility pit



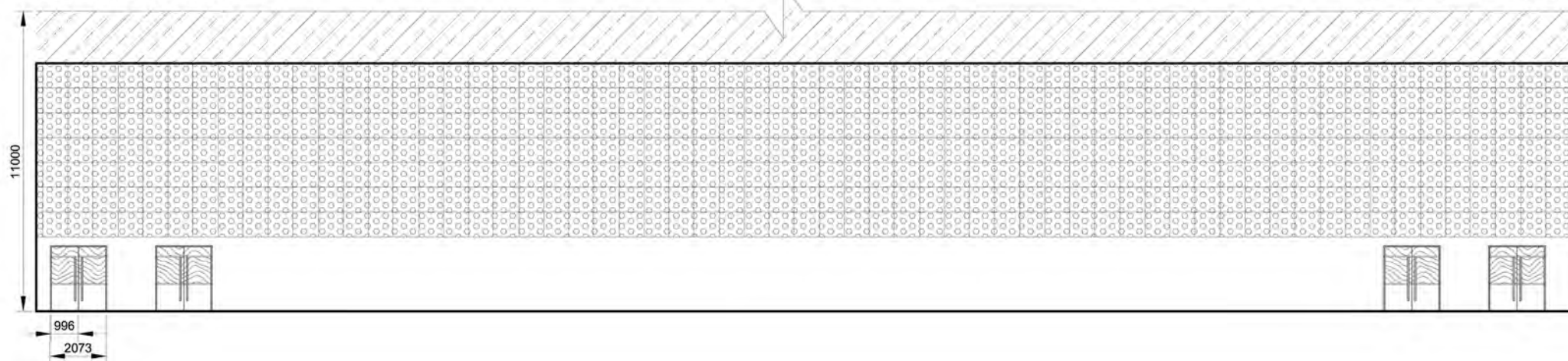
**WALL 1A**  
ENTRANCE TO HALL 601

ENTRANCE TO HALL 603

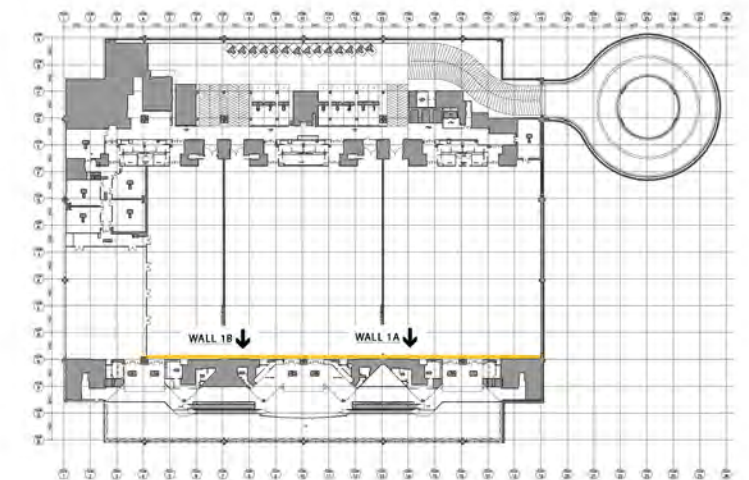


**WALL 1B**  
ENTRANCE TO HALL 604

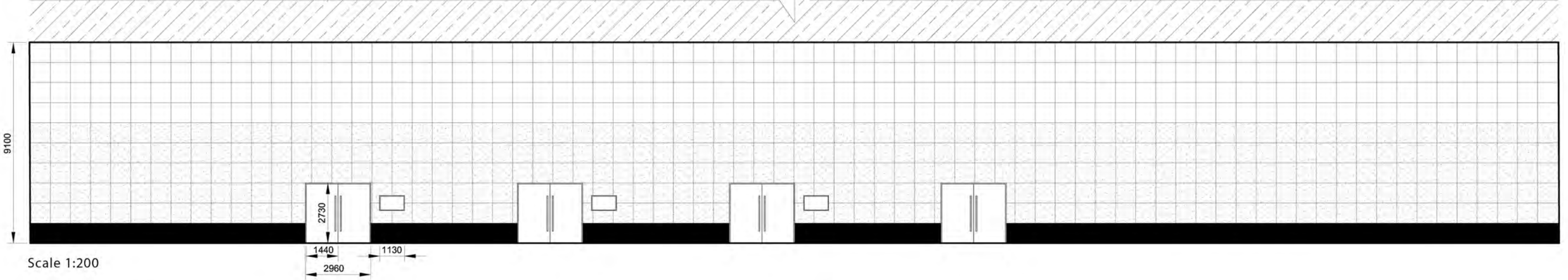
ENTRANCE TO HALL 605



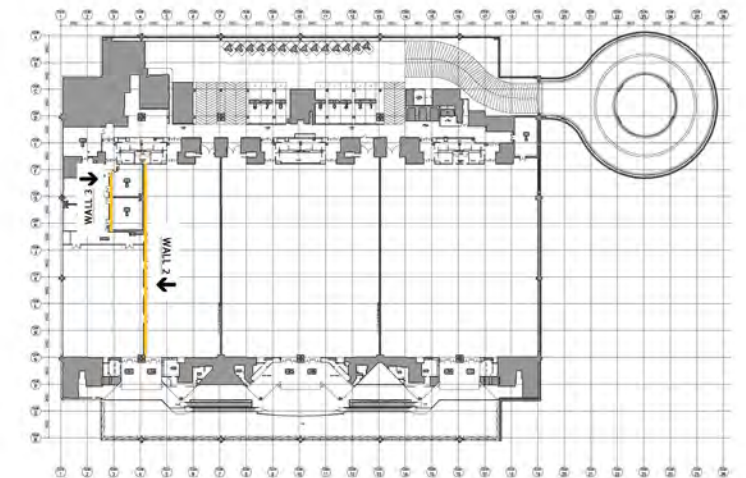
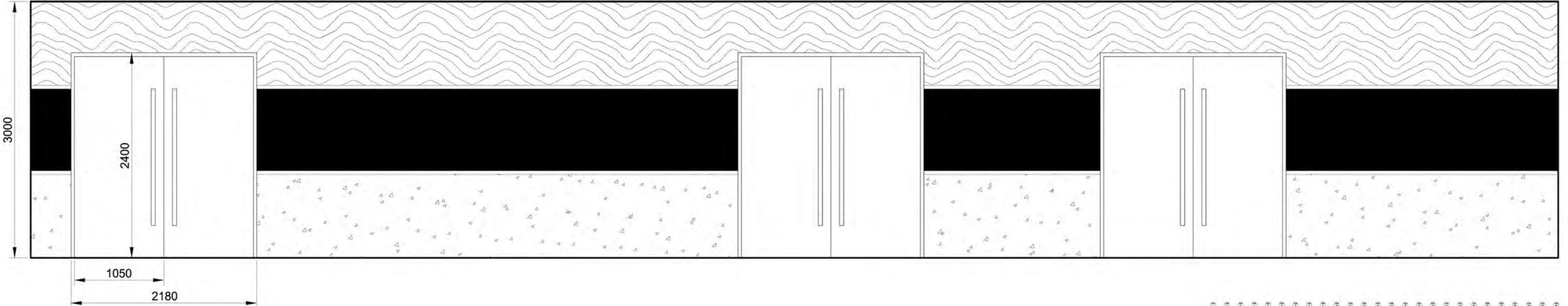
Scale 1:220



WALL 2 GRIDLINE CON N GRIDLINE CON E

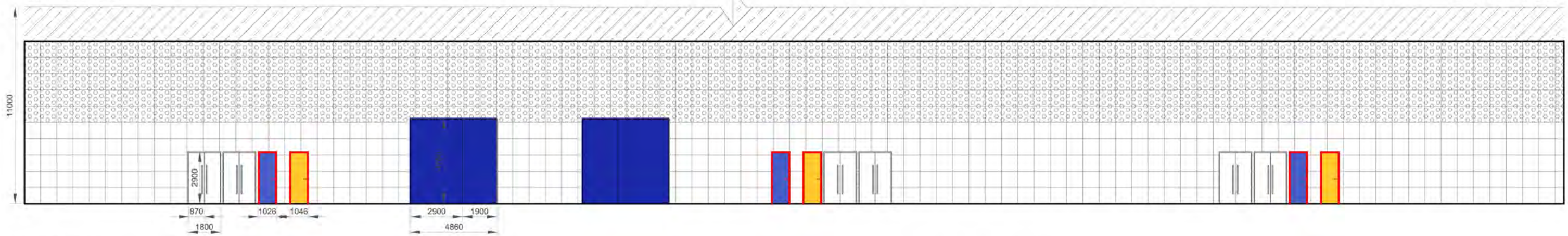


WALL 3 GRIDLINE CON F GRIDLINE CON J



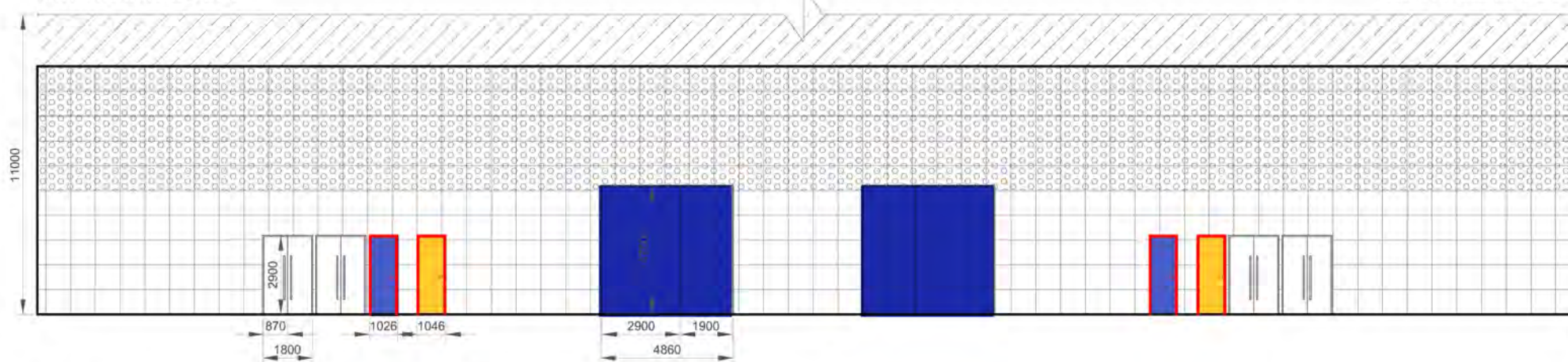
**WALL 4A**  
EXIT FROM 603

EXIT TO HALL 601



**WALL 4B**  
EXIT FROM HALL 605

EXIT FROM HALL 604



Scale 1:220

## M&E Risers Specifications

### Electrical Riser

- 1 x 100A TPN Isolator
- 1 x 200A TPN Isolator
- 1 x 300A TPN Isolator
- 1 x 400A TPN Isolator
- 1 x 13A SPN Socket Outlet

### Mechanical Riser

#### Fume Extraction:

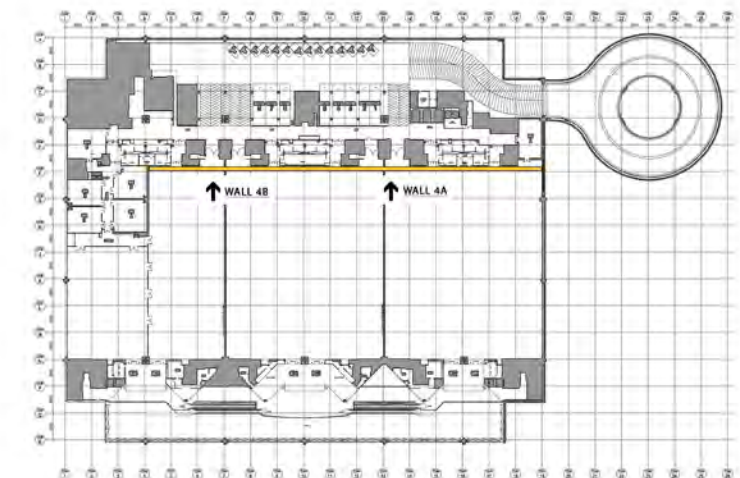
- 1 x Fume exhaust main duct
- 2 x tee-off points per hall, one at the high level and one at the low level
- 0.1m<sup>3</sup>/s (211 CFM) of fume per tee-off point
- Total fume extraction rate for hall will be 1.2m<sup>3</sup>/s (2500 CFM)

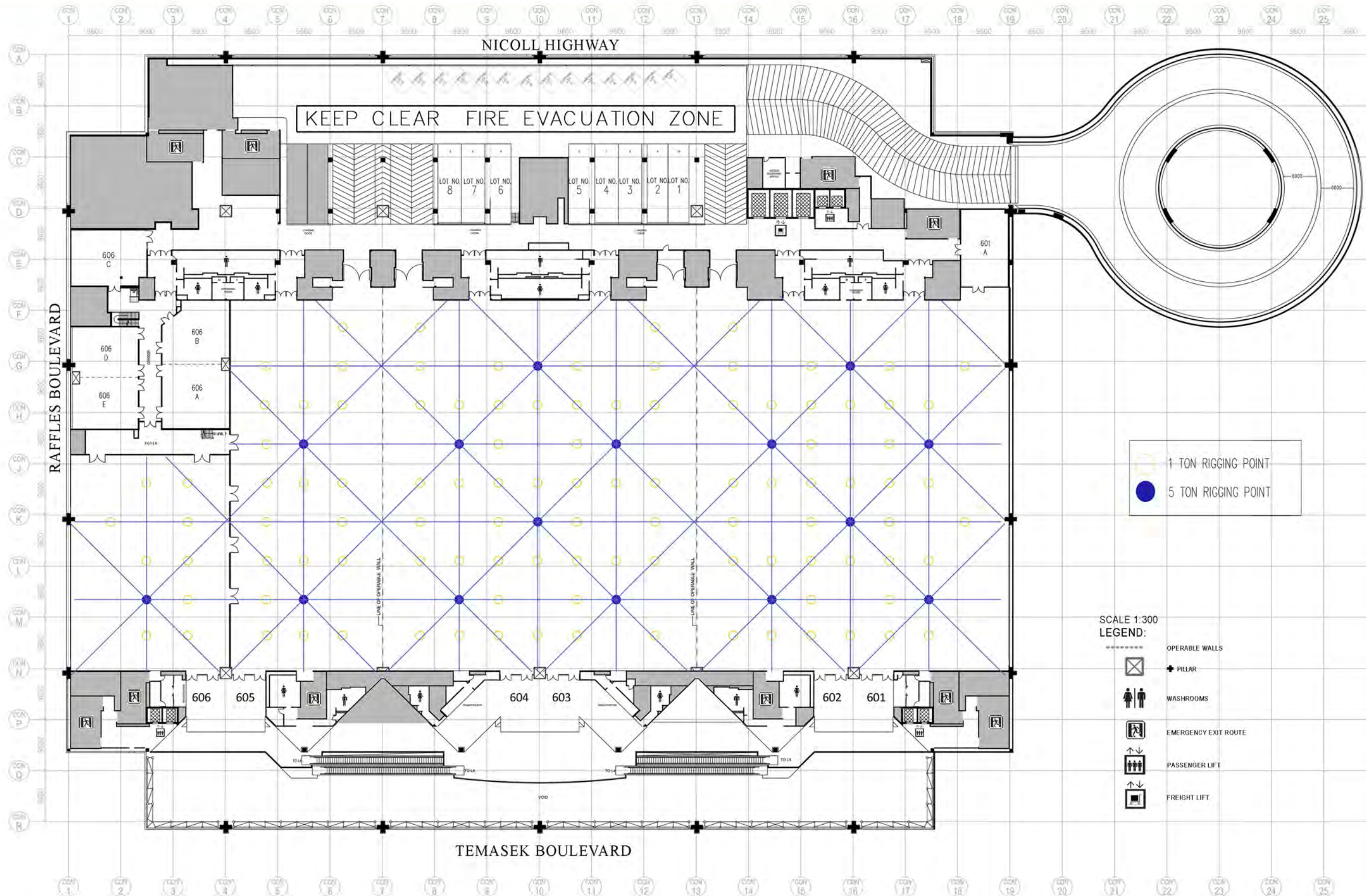
#### Auxiliary Cooling Water:

- 2 x 65mm (2<sup>17</sup>/<sub>32</sub>" diameter auxiliary cooling water supply and return pipes with low level tee-off points at each hall
- Water Supply Pressure: 1-2 bar (14.5-29 psi)
- Water Supply Temperature: 32°C (89.6F)
- Total Cooling Capacity: 200TR at 37°C (98.6F)
- Water return temperature total water supply: 33.5L/s

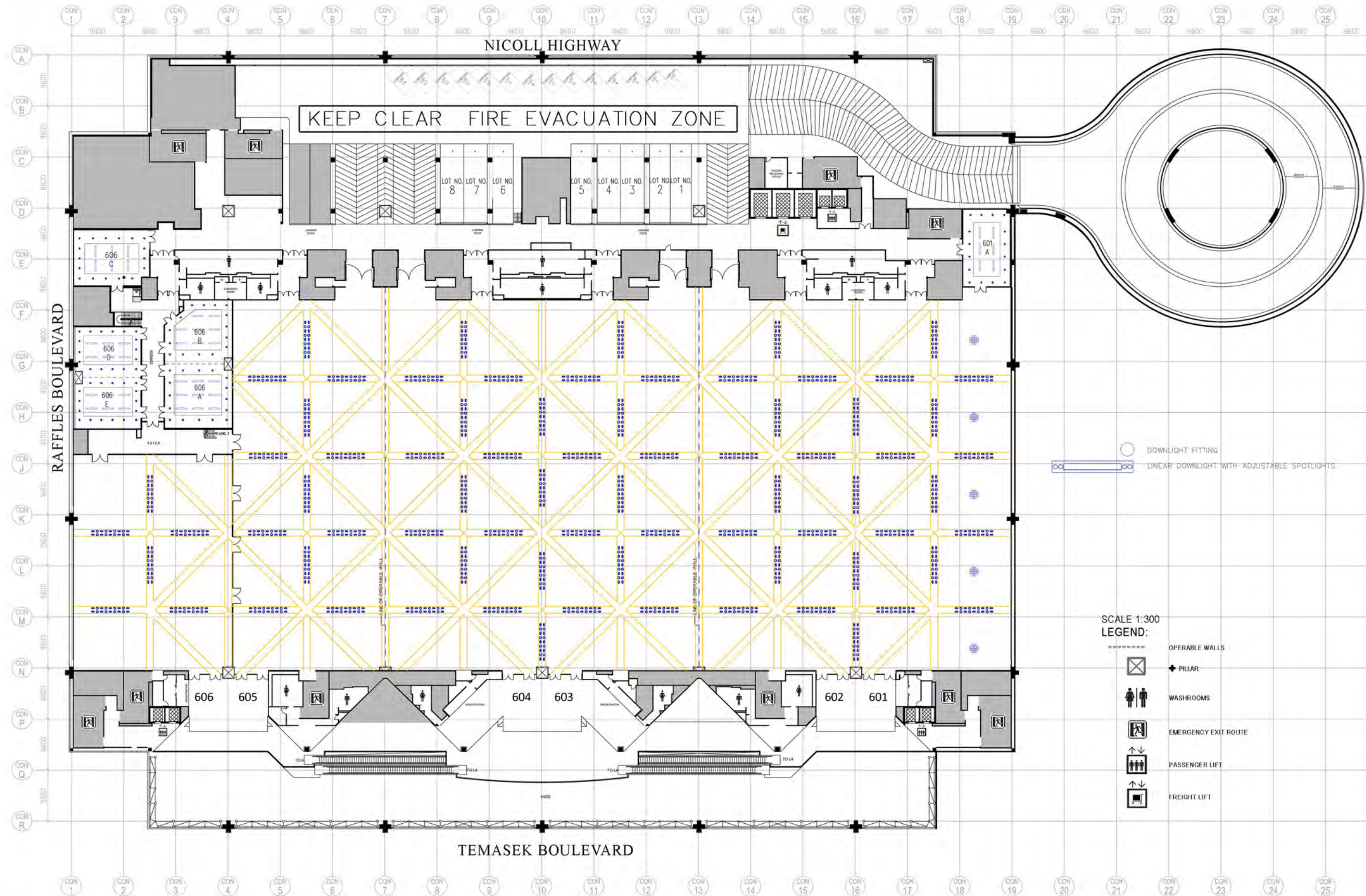
### Legend:

- Freight Doors
- Mechanical Risers
- Electrical Risers





Scale 1:600



Scale 1:650